

Description

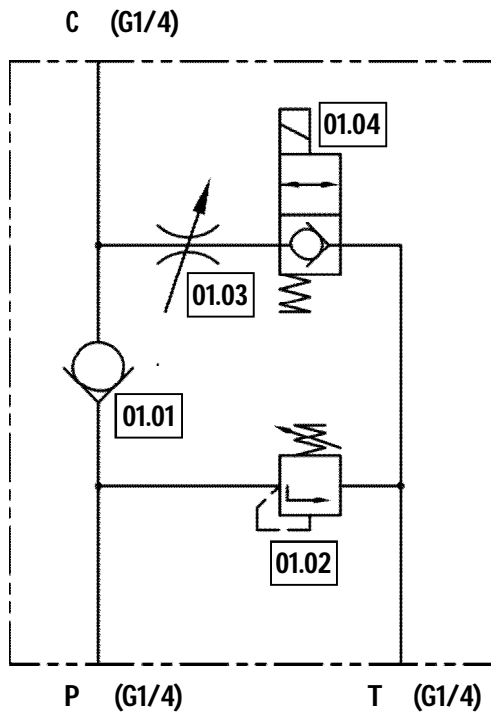
The Lift Module (LM) allows free flow from port P to port C and provides a leak-free closure at port C

Flow from port C to port T can be enabled by energizing the seat type poppet valve. This flow can be controlled via an in-built flow control valve.

A safety relief valve is provided on port P to limit the pressure of the system.



Hydraulic Circuit



Port P is connected to port C through check valve 01.01. A leak-free closure is provided at port C by check valve 01.01 and directional poppet valve 01.04.

Port P pressure is controlled by the pressure relief valve 01.02

Return path from port C to port T is made available by energizing the directional poppet valve 01.04. Return flow is controlled by flow control valve 01.03

Ordering Code

LM06	SC	M	A220	-01
Lift Module Size 06			Design Series (Subject to Change)	
Leak free closure, Normally Closed	SC			
Leak free closure, Normally Open	SH			
Without Manual Override	Omit			
Standard Manual Override	M			
		Coil Voltage		
		A110	110V AC, 50-60Hz	
		A220	220V AC, 50-60Hz	
		D12	12V DC	
		D24	24V DC	