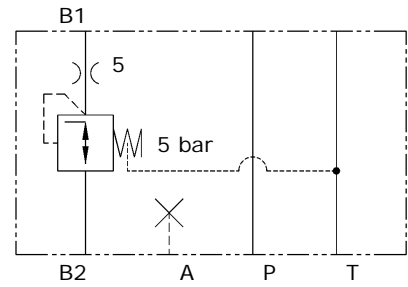
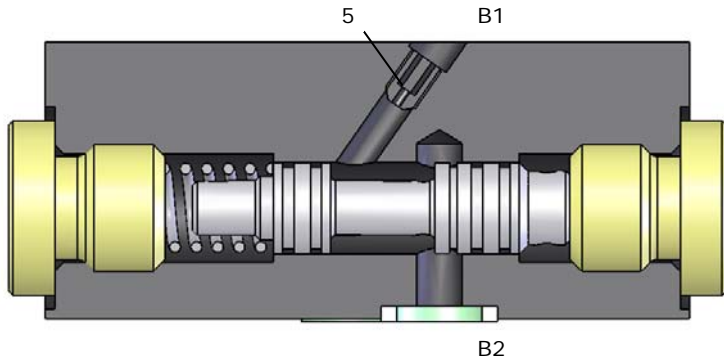


Description

Sandwich Type, Spool valve used to prevent pressure peaks and acoustic unloading shocks in return lines.
Mounting Pattern ISO4401-3 NFPA T3.5.MR1 and ANSI B93.7 D 03



Section and Symbol



Technical data and Ordering Information

General

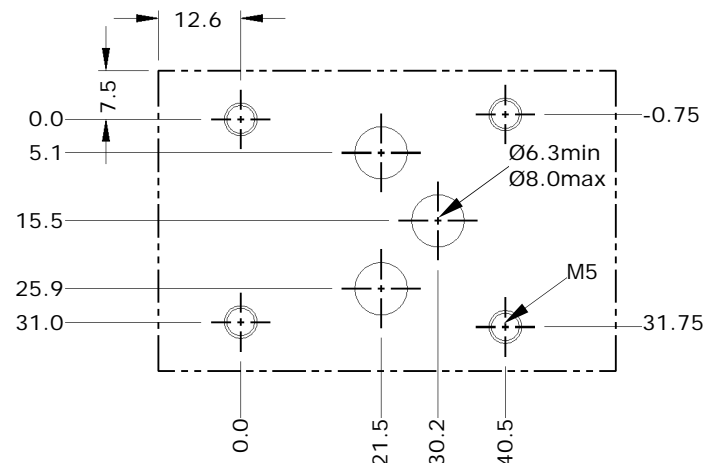
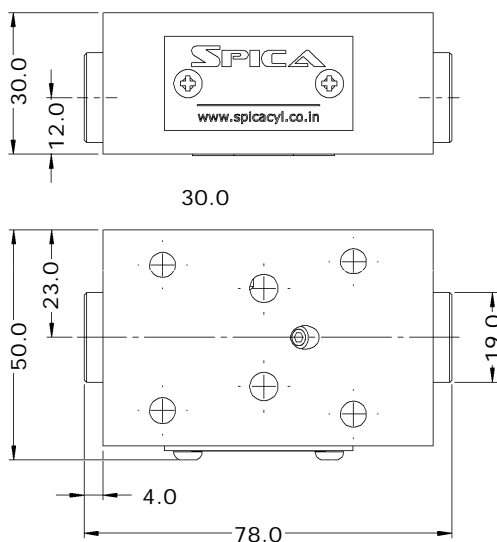
Part Number		Y02600-001	Y02600-001-V
Weight	kg	0.9	
Installation Orientation		Optional	
Orifice Size	mm	1.2	

Hydraulic

Nominal Pressure Ports P,B,T	bar	350	
Hydraulic Fluid		Mineral Oil	
Seals		NBR	FKM
Fluid Temperature	°C	-30 to 80	-20 to 80

Use Part Number for Ordering Valve

Installation

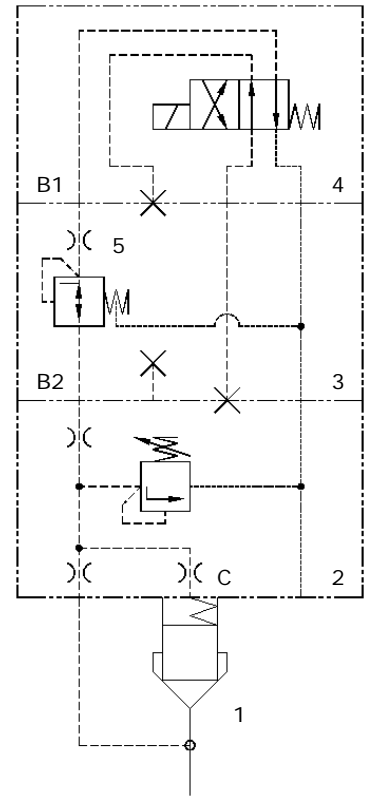


Application

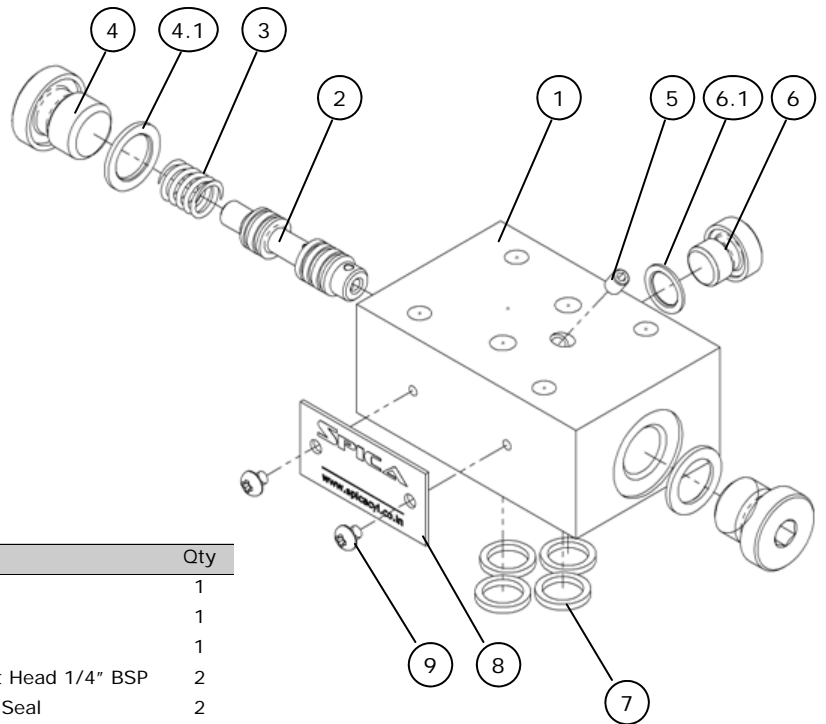
The shock dampening valve (3) is installed between a pilot valve (2) and the unloading directional control valve (4) of a pilot operated Pressure relief valve (1).

The opening of the connection from B2 to B1, and hence the flow from the control port 'C' of the main stage (1) is controlled by means of the shock dampening valve. This prevent pressure peaks and acoustic unloading shocks in return lines.

The degree of dampening is dependent on the size of orifice (5) installed in the shock dampening valve. As a standard an orifice of Ø1.2mm is installed in the valve.



Spares



Item	Part Number	Description	Qty
1	Y02603	Body	1
2	Y02602	Spool	1
3	7BO/Y02604	Spring	1
4	7BO/VSTIG02E	Plug, Socket Head 1/4" BSP	2
4.1	* 7BO/ED14	Elastomeric Seal	2
5	7BO/GRSM5-1.2	Orifice, M5 x Ø1.2	1
6	7BO/VSTIG01E	Plug, Socket Head 1/8" BSP	1
6.1	* 7BO/ED10	Elastomeric Seal	1
7	* 7BO/Y02227	R-ring	4
8	7BO/Y02031	Label	1
9	7BO/PHS-M03X0.5-04L	Screw M3 x 4L	2

* Recommended Spares
Use Part Number for Ordering Spares